

MIGRANT ORGANISATIONS

MIGRANT ORGANISATIONS IN GERMANY

In Germany, there are approximately 12,400 to 13,300 migrant organisations (MO) which are active and organised as independent entities. Of these, around 70 percent receive public funding. In addition, 36 federal associations of migrant organisations are active as superordinate interest groups. MOs are involved in virtually all areas of civil society engagement and their areas of activity vary widely as a result (see figure below). MOs also perform an important function. Because their members often have experience of migration themselves, they are frequently the first point of contact for people from an immigration background, both immediately following immigration and also in later stages of life.

When considering the issue of labour market integration, it is clear that MOs have competencies which non-migrant labour market stakeholders are not necessarily able to provide. This also makes them key stakeholders and strategic steering partners in the area of integration and skilled worker immigration.

MO AREAS OF POTENTIAL



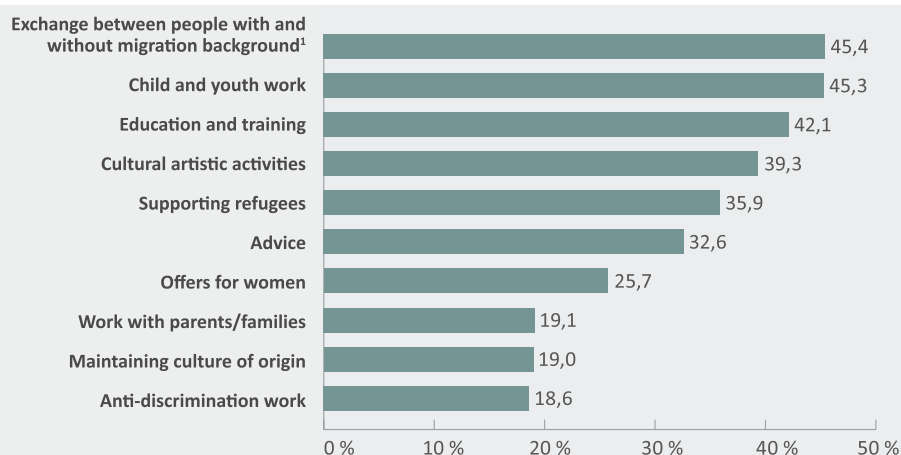
They have very good access to migrant communities and are disseminators and bridge builders as regards offers for the target group.

They have many years of experience in working empathetically in the area of migration and in advising and supporting immigrants.

They have expertise on specific countries of origin.

Advice can often be provided in languages of origin.

MO AREAS OF ACTIVITY



Note: ¹Migration background

Source: SVR-Forschungsbereich 2020, own representation



Migrant organisations are described as societies, federations, clubs and informal associations in which people with a migration background form the majority of members, i.e. over half (cf. Ludger Pries on behalf of bpb. de 2013).

INFORMATION ON THE TOPIC



Diverse activities – broad networks – partial integration?

Migrants' organisations as a creative force in society, Expert Council on Integration:
<https://t1p.de/nsmc6>



What are migrant (led-) organisations?
Federal Agency for Civic Education, Bonn:
<https://t1p.de/r6dmb>



Partners and bridge builders, migrant organisations in Germany, IQ konkret, specialist publication from the Network "Integration through Qualification (IQ)"
<https://t1p.de/owhag>

MO IN NETWORK IQ – INTEGRATION THROUGH QUALIFICATION

18 MOS ARE IMPLEMENTING 23 PROJECTS WITHIN NETWORK IQ



AAU e. V., Nürnberg, www.aauv.de

Academia Española de Formación – Spanische Weiterbildungs-akademie e. V., Bonn, <https://aef-weiterbildung.de>

Arbeitsgemeinschaft selbstständiger Migranten e. V. (ASM), Hamburg, www.asm-hh.de

Club Dialog e. V., Berlin, www.club-dialog.de

Deutsch-Russisch-Ukrainische Kulturschule ELFE e. V., Saarbrücken, content.elfe-ev.de

Flüchtlingsrat Schleswig-Holstein, Kiel, www.frsh.de

Forum Gemeinsam für Integration - GEMI e. V., Bochum, www.forum-gemi.de

Iberoamerica e. V., Jena, www.iberoamerica-jena.de

kargah e. V. - Kargah Verein für interkulturelle Kommunikation, Flüchtlings- und Migrationsarbeit, Hannover, kargah.de

Kontakt Eberswalde e. V., Eberswalde, kontakt-eberswalde.blogspot.com

KUBI Gesellschaft für Kultur und Bildung gGmbH, Frankfurt am Main, kubi.info

La Red - Vernetzung und Integration e. V., Berlin, la-red.eu

Landesnetzwerk Migrantenorganisationen Sachsen-Anhalt (LAMSA) e. V., Halle (Saale), www.lamsa.de

MA.i - Migration und Arbeitswelt e. V., Köln, www.migration-arbeitswelt.de

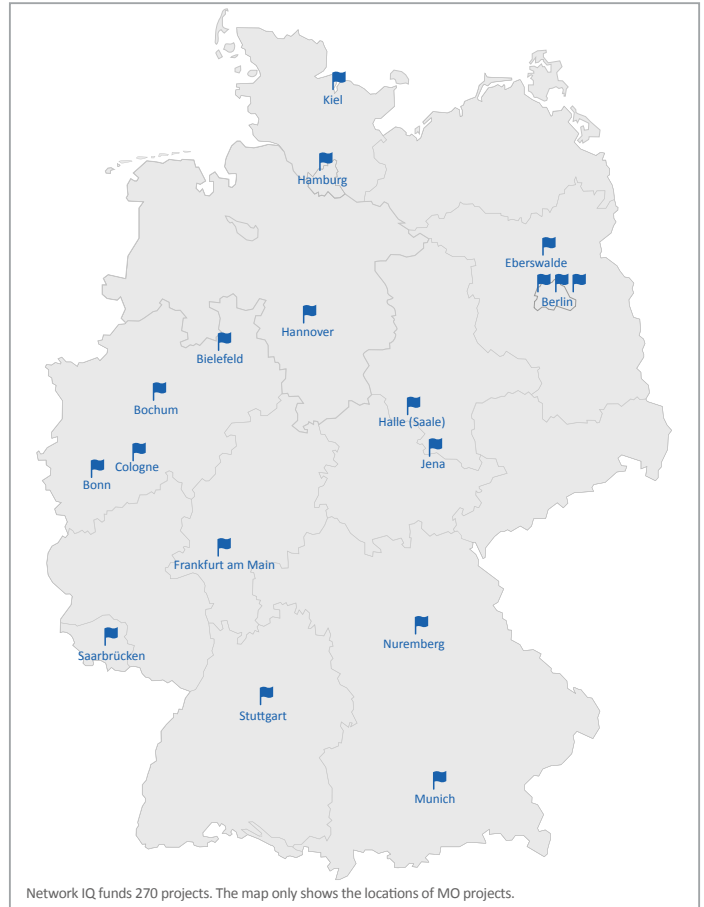
MOZAIK gemeinnützige Gesellschaft für interkulturelle Bildungs- und Beratungsangebote mbH, Bielefeld, www.mozaik.de

SGN Support Group Network Deutschland e. V., Stuttgart, www.sgn-d.de

Türkischer Bund in Berlin-Brandenburg e. V., Berlin, www.tbb-berlin.de

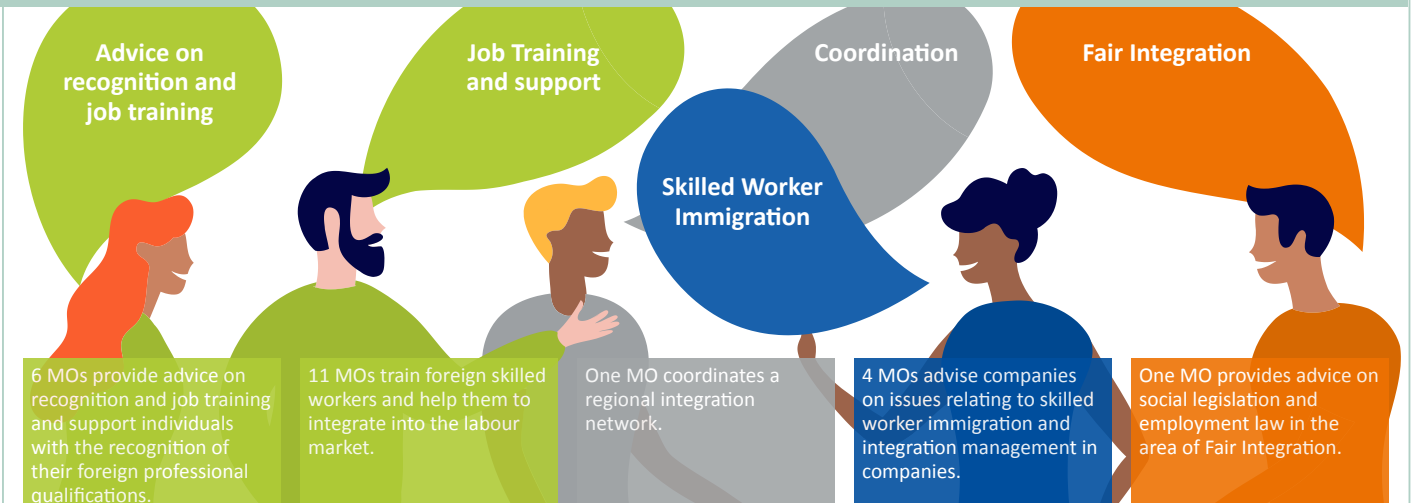
Visiones e. V., München, visiones-ev.com

LOCATIONS



Network IQ funds 270 projects. The map only shows the locations of MO projects.

MAIN FOCUS OF WORK



Want to know more?

<https://www.netzwerk-iq.de/en/>

IQ Networking Project (IQ NP) at the Entwicklungsgesellschaft für berufliche Bildung mbH info@ebb-bildung.de Tel. +49 (221) 932981-0

The Network IQ – Integration through Qualification is funded by the Federal Ministry of Labour and Social Affairs and the European Union through the European Social Fund Plus (ESF Plus) and administered by the Federal Office for Migration and Refugees. Strategic partners in implementing the programme are the Federal Ministry for Education, Family Affairs, Senior Citizens, Women and Youth and the Federal Employment Agency.

Funded by:



Administered by:



In cooperation with:

